

MATRIX UV SERIES – PRESENTED BY AUTOMARK

UV FLATBED

MATRIX UV · CUBEJET · MONSTER JET

One platform. Three Z-axis ranges. Unlimited possibilities.

UV CURABLE INK

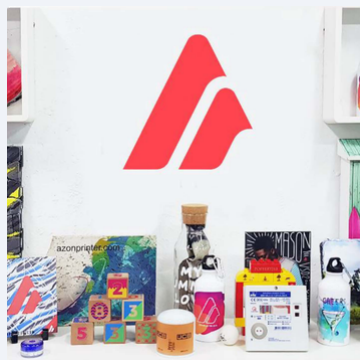
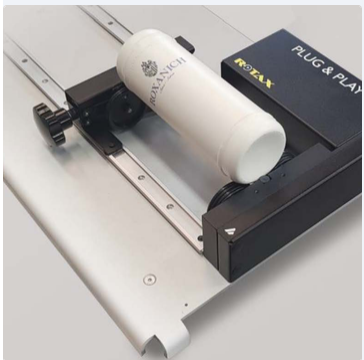
EN 71-3 APPROVED

ADA BRAILLE READY

LOOP MODE

ROTARY ATTACHMENT

APPLICATION EXAMPLES

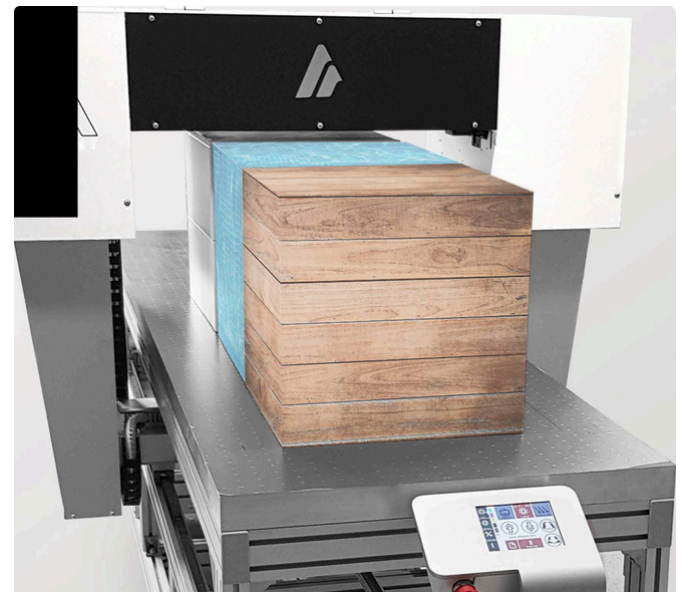


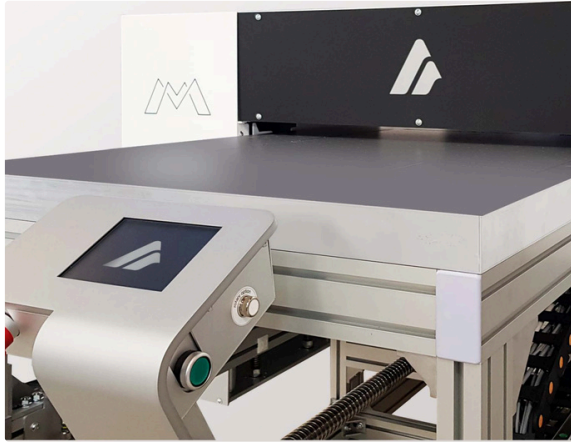
KEY BENEFITS

- One Platform, Three Z-Axis Ranges**
 All three models share the same Azon TurboJet ink, CONTI supply system, and Azon RIP software – scale up without retraining staff or changing consumables.
- Print on Almost Any Substrate**
 Wood, stone, plastic, glass, ceramic, metal, and more. The selective vacuum table holds materials of virtually any shape securely in place.
- EN 71-3 Certified Azon TurboJet Ink**
 Phthalate-free, vivid color output with no drying time required. Adjustable UV LED curing ensures adhesion on even the most challenging surfaces.
- Four Table Sizes to Fit Your Production**
 Choose from 590x1200, 590x1800, 1100x1200, or 1100x2500 mm print areas – the same footprint options across all three models, scaled to your workflow.

Z-AXIS HEAD CLEARANCE COMPARISON

MATRIX UV		0.5 – 200 mm
CUBEJET		0.5 – 400 mm
MONSTER JET		0.5 – 920 mm





HOW IT WORKS

AZON PLATFORM – SHARED TECHNOLOGY, SCALABLE Z-AXIS

All three models in the Matrix UV Series are built on the same proven Azon UV flatbed platform. The print head travels on a precision gantry over a zoned vacuum table, depositing Azon TurboJet UV ink in a single pass and curing it instantly with an adjustable LED array. The CONTI continuous ink supply system eliminates downtime during refills, while Azon RIP software provides full per-nozzle control, loop mode automation, and ADA Braille translation – all from one interface.

The key differentiator between models is the Z-axis head clearance. The **Matrix UV** handles flat and moderately thick substrates up to 200 mm, ideal for tiles, boards, panels, and merchandise. The **CubeJet** extends that range to 400 mm, enabling printing on boxes, crates, fire extinguishers, and luggage. The **Monster Jet** pushes the boundary to 920 mm, enabling direct printing on chairs, furniture, industrial parts, and virtually any three-dimensional object. All three models are available in four table sizes and can be upgraded with the optional rotary attachment for cylindrical objects up to 33 cm in diameter.

TECHNICAL SPECIFICATIONS

Specification	Matrix UV	CubeJet	Monster Jet
SUBSTRATE			
PRINT AREA (4 SIZES)	590x1200 / 590x1800 1100x1200 / 1100x2500 mm	590x1200 / 590x1800 1100x1200 / 1100x2500 mm	590x1200 / 590x1800 1100x1200 / 1100x2500 mm
HEAD CLEARANCE (Z)	0.5 – 200 mm	0.5 – 400 mm	0.5 – 920 mm
MAX OBJECT WEIGHT	50 kg/m ² (10.2 lb./ft ²), non-concentrated load		
MATERIALS	Wood, Stone, Plastic (PET, PE, PVC, PP, PS, PLA, PC, PMMA, POM, PA, ABS), Glass, Ceramic, Metal		
PRINT			
TECHNOLOGY	Ink-jet (On-demand Piezo)		
DROP SIZE	3.5 – 21 picolitre		1.5 – 2 picolitre
RESOLUTION	360 / 720 / 1080 / 1440 dpi (Monster Jet adds 2880 dpi)		
SPEED	3.20 – 44.0 SqM/Hr (model & mode dependent)		
INK & SOFTWARE			
INK TYPE	Azon UV TurboJet – EN 71-3 Certified, Phthalate Free		
COLORS	CMYK + White + Varnish Curing: Adjustable UV LED		
SUPPLY SYSTEM	CONTI – 6x 500 ml bulk tanks (zero downtime refill)		
RIP SOFTWARE	Azon RIP 64-bit with ADA Braille translator		
POWER	95 W standby / 2.6–5 kW max		85 W standby / 2.0 kW max

Ready to learn more?
We're here to help.

Contact Automark today to discuss which Matrix UV Series model is the right fit for your production needs and budget.

512-593-7100

www.automarkco.com